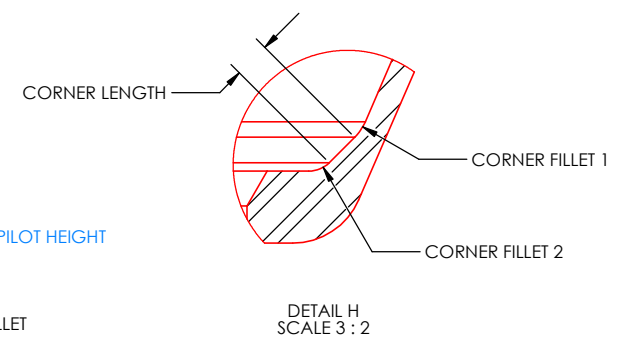
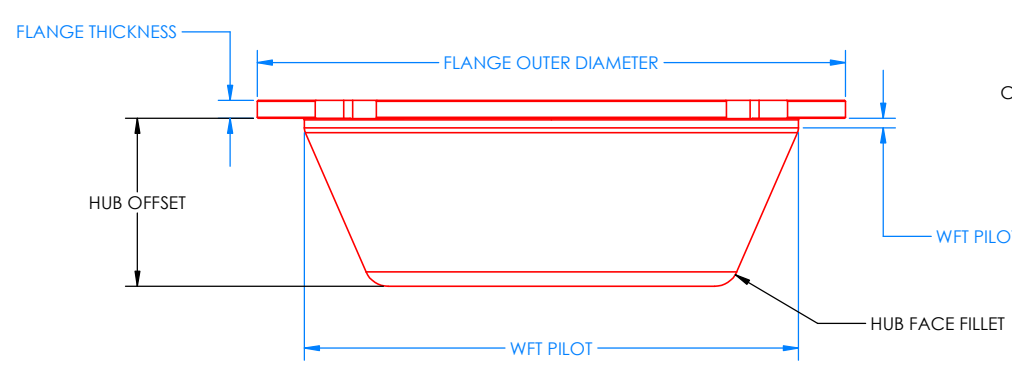
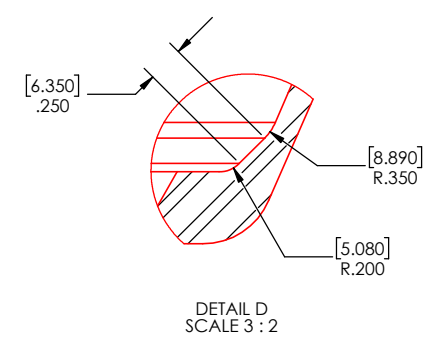
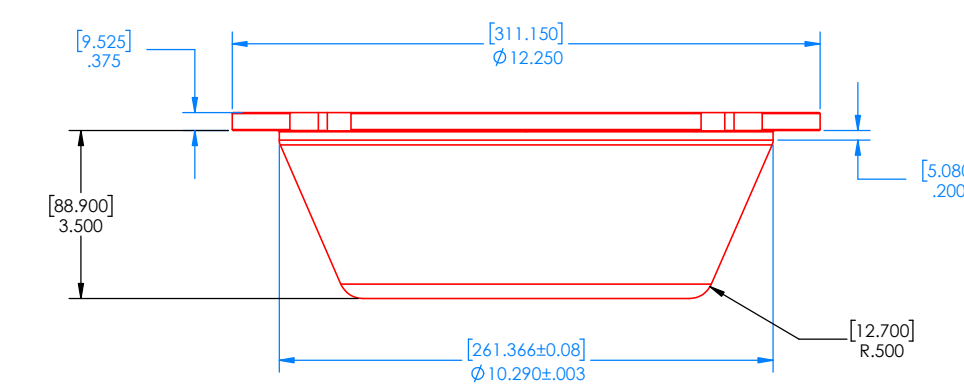
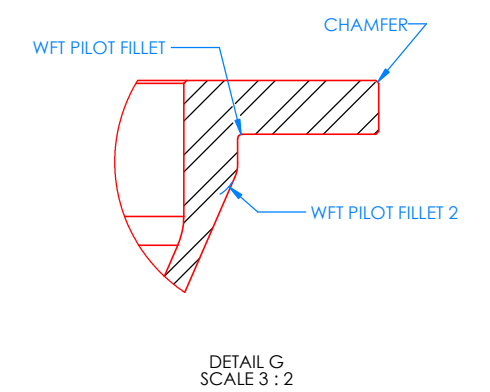
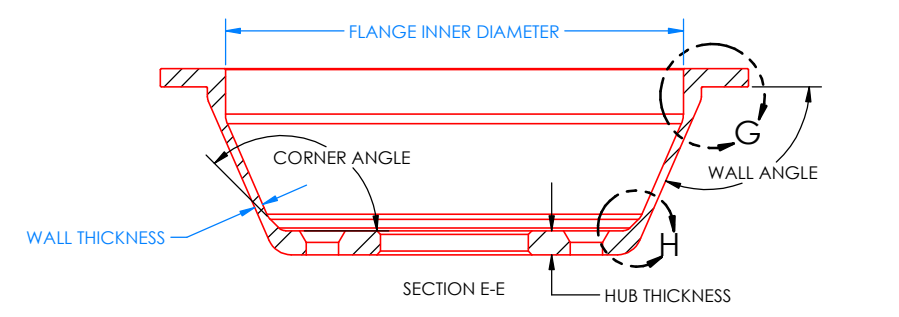
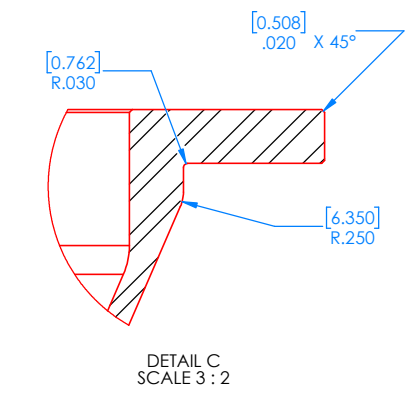
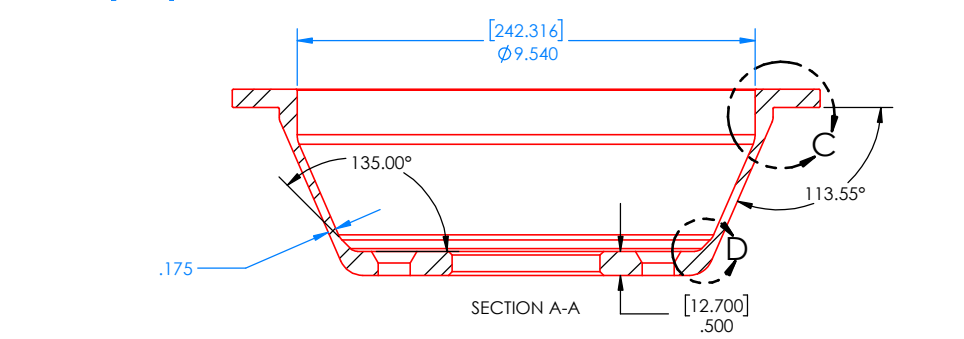
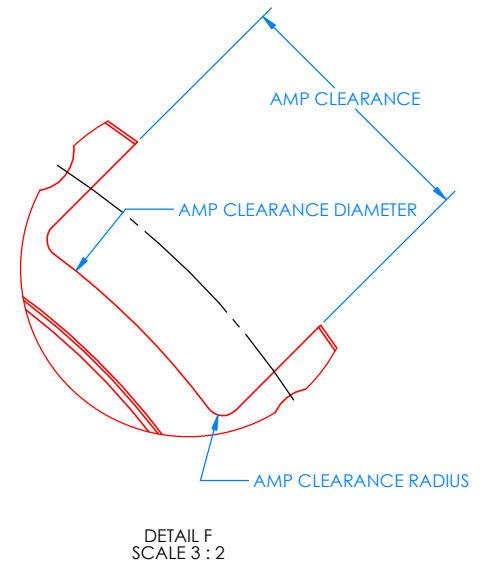
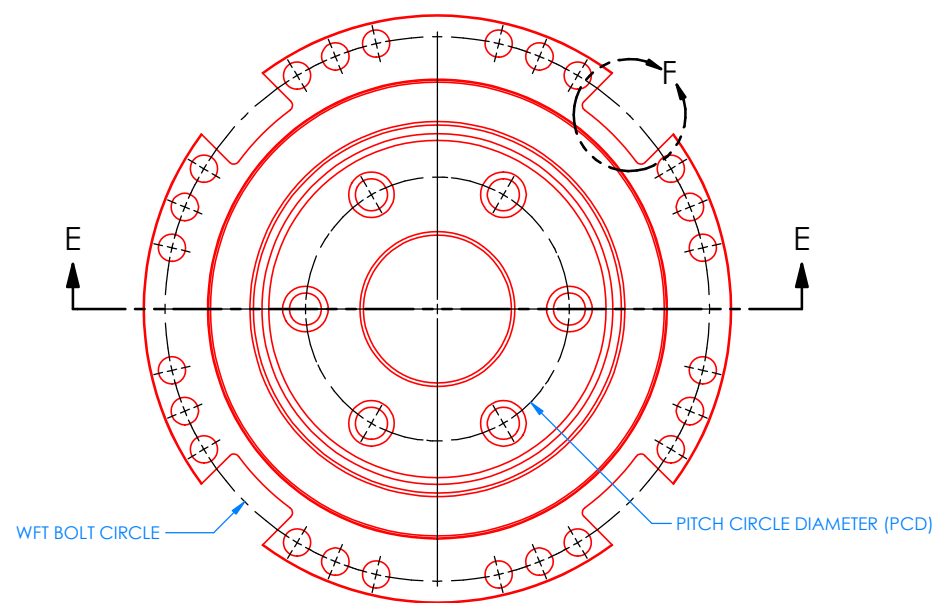
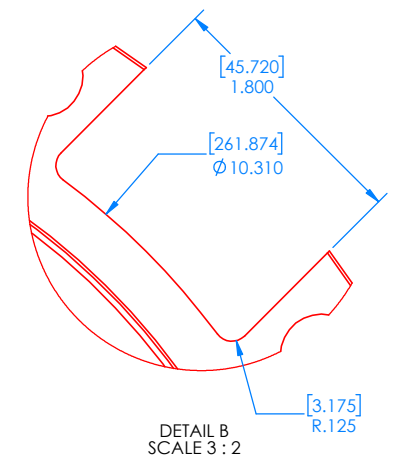
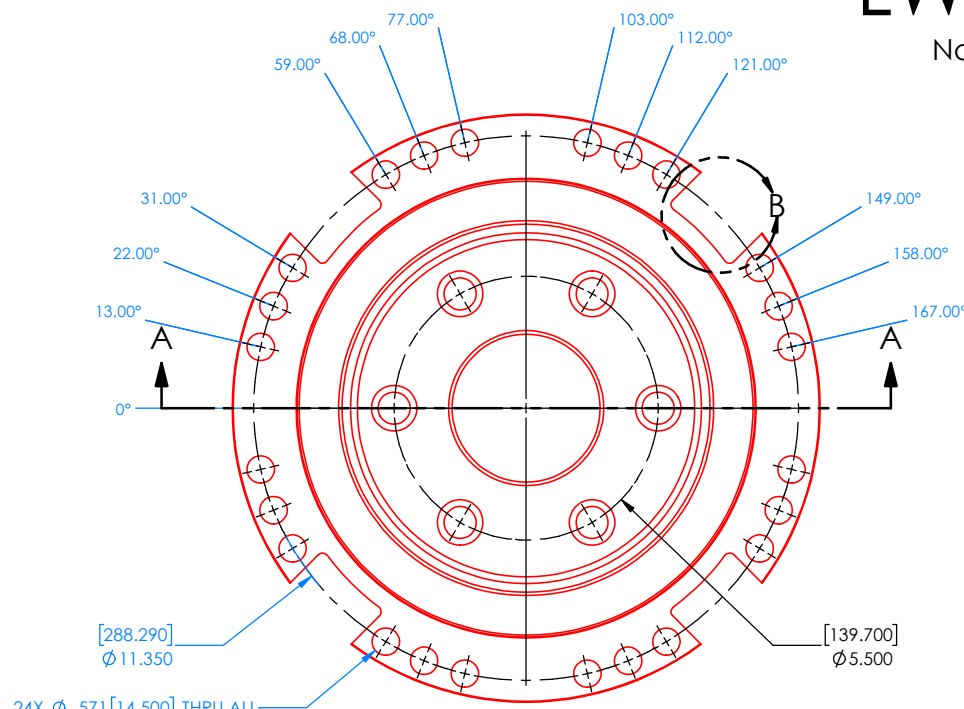


LW-2T-20K Hub Adapter Design Guide

Note: Blue dimension are CRITICAL and CANNOT change. Black dimensions can change.



It is essential that the adapters match the recommended guidelines. This will ensure the system can withstand the rated loads and provide the most accurate results. The critical features are shown in blue. Customers may change all other geometry. Examples of permitted changes are shown on the second sheet.

The "HUB THICKNESS" should not be less than 0.500 in (12.700 mm).

Detail D shows geometry that reduces the material stresses to increase the adapter fatigue life. The "CORNER ANGLE" should be between 115-145 degrees.

Michigan Scientific Corporation (MSC) machines hub adapters from 17-4 H1100 stainless steel. This material provides good insulation from brake heat. Alloy steels can be used but they will conduct brake heat more than the stainless steel. The material should have a yield strength of at least 890 MPa (130 ksi) and a hardness between 32 and 45 HRC.

MSC verifies all rim and hub adapter assemblies using FEA to simulate the SAE J328 wheel durability standard. This should be done with all adapter systems to verify the load ratings and fatigue life of the adapters. A LW-2T-20K transducer has a SAE J328 static load rating of 4000 lb (1815 kg). This should never be exceeded.

MSC can check your adapter designs at no cost. Contact MSC online at michsci.com/contact-us or via phone at 1-231-547-5511.

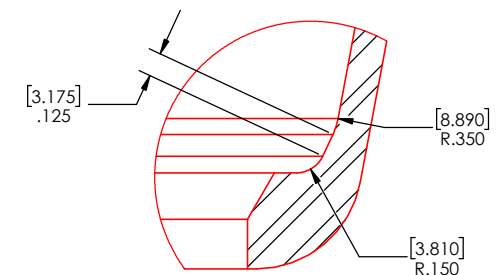
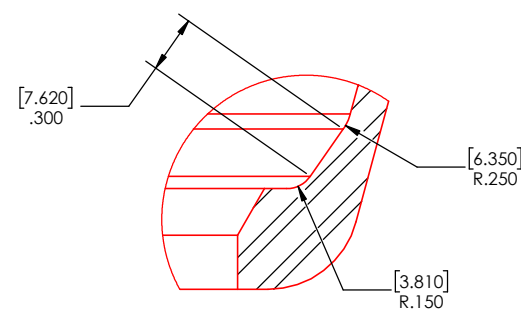
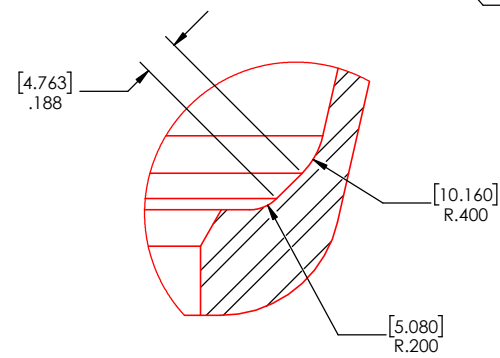
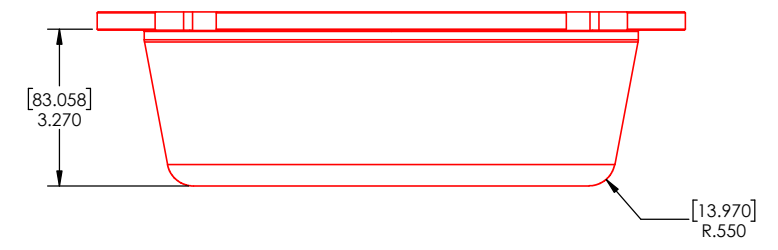
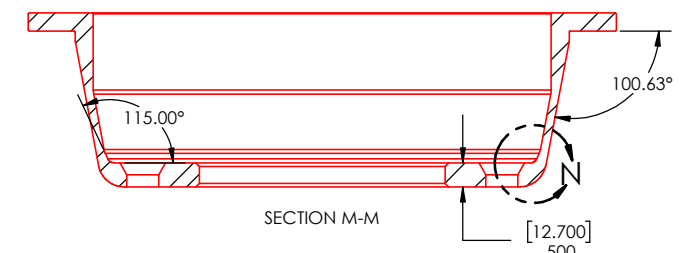
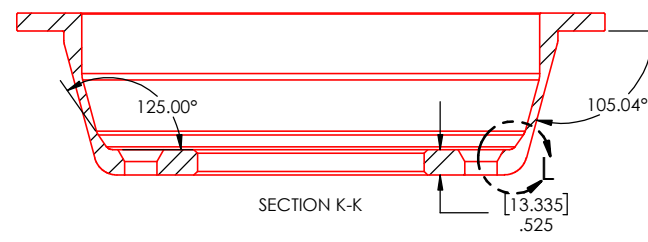
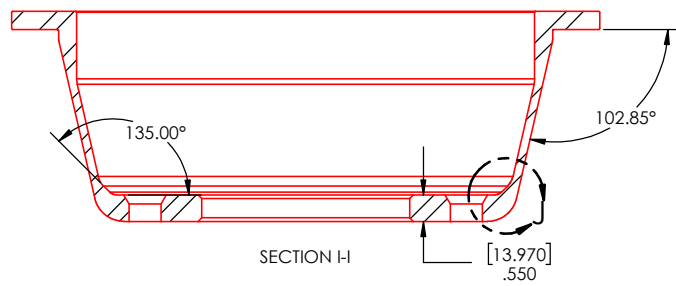
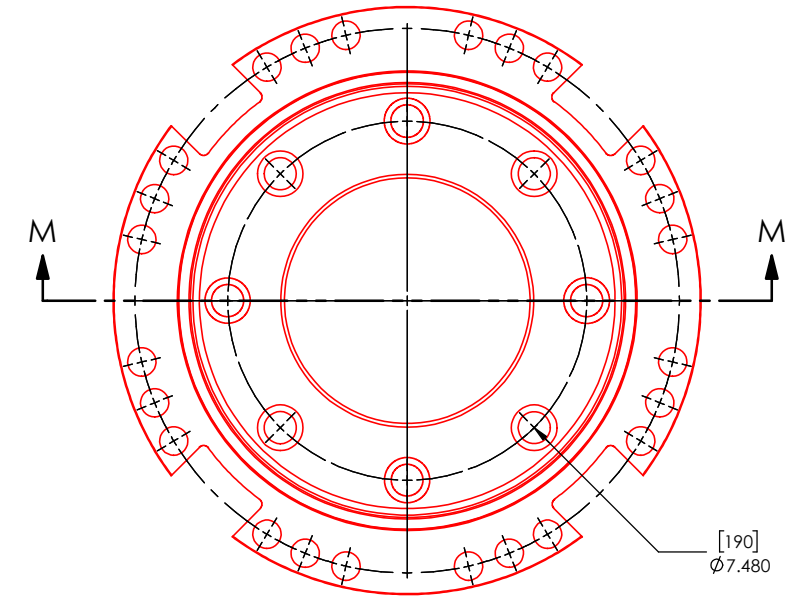
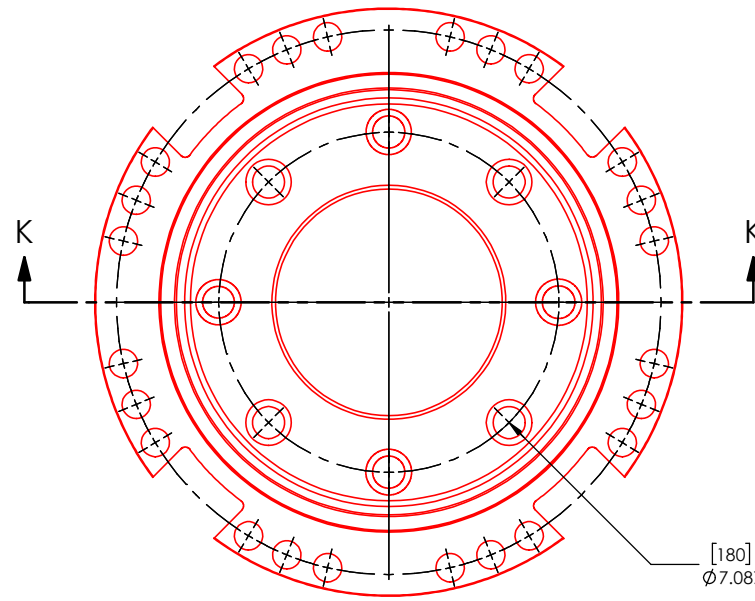
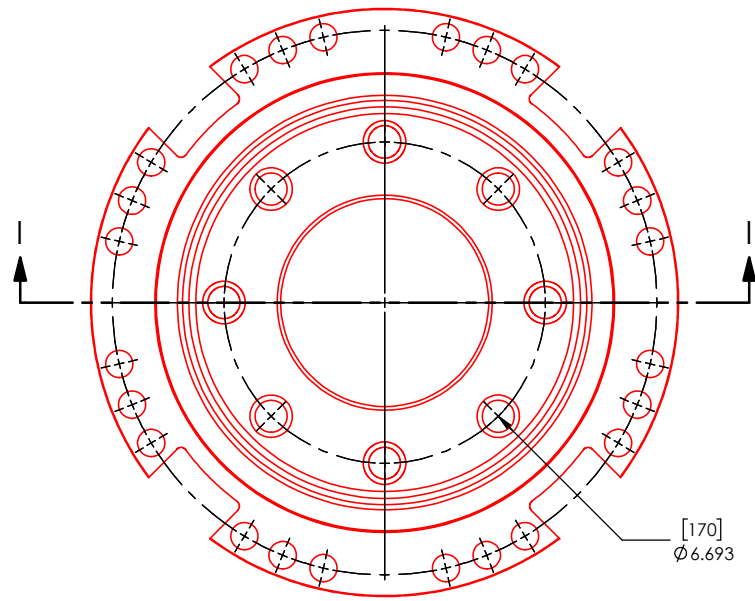
IMPORTANT: If your system uses Telemetry, make sure to check that the Hub Adapter and Telemetry fit together.

Details and specifications provided in this document are purely for informational purposes and are subject to alterations. No liability is accepted for errors or omissions. ©2020 Michigan Scientific Corporation

UNLESS OTHERWISE SPECIFIED:		DATE	NAME	MICHIGAN SCIENTIFIC CORPORATION
DIMENSIONS ARE IN INCHES (mm)		3/30/2020	JPSaley	8500 ANCE ROAD
TOLERANCES:		CHECKED	SKRudy	CHARLEVOIX, MICHIGAN 49720
XXX ±.0010		ENG APPR		www.michsci.com
XX ±.005		FRAC		
X ±.01		ANG		
FRAC		MFG APPR		
ANGULAR: MACH ±				
BEND ±				
WEIGHT				
MATERIAL	17-4 H1100	PROPRIETARY AND CONFIDENTIAL THE INFORMATION CONTAINED IN THIS DRAWING IS THE SOLE PROPERTY OF MICHIGAN SCIENTIFIC CORPORATION. ANY REPRODUCTION IN PART OR AS A WHOLE WITHOUT THE WRITTEN PERMISSION OF MICHIGAN SCIENTIFIC CORPORATION IS PROHIBITED.		PRODUCT LINE: LW-2T-20K CUSTOMER CODE: _____ PROJECT CODE: _____
FINISH		DESCRIPTION: Hub Adapter Design Guide SIZE: DWG. NO. LW-2T-20K Hub Adapter Design Guide SCALE: 1:2		REV: _____ SHEET 1 OF 2

LW-2T-20K Hub Adapter Design Guide

Note: Blue dimension are CRITICAL and CANNOT change. Black dimensions can change.



It is essential that the adapters match the recommended guidelines. This will ensure the system can withstand the rated loads and provide the most accurate results. The critical features are shown in blue. Customers may change all other geometry. Examples of permitted changes are shown above.

Details and specifications provided in this document are purely for informational purposes and are subject to alterations. No liability is accepted for errors or omissions. ©2020 Michigan Scientific Corporation

UNLESS OTHERWISE SPECIFIED:		DATE	NAME	MICHIGAN SCIENTIFIC CORPORATION 8500 ANCE ROAD CHARLEVOIX, MICHIGAN 49720 www.michsci.com	
DIMENSIONS ARE IN INCHES (mm)		DRAWN	3/30/2020	JPS/ley	PRODUCT LINE
TOLERANCES:		CHECKED	-	-	LW-2T-20K
XXX	±.0010	ENG APPR	-	-	CUSTOMER CODE
XX	±.005	MFG APPR	-	-	PROJECT CODE
XX	±.01				DESCRIPTION
XX	FRACTIONAL				Hub Adapter Guidelines
XX	ANGULAR: MACH #				SIZE
XX	FINISH				DWG. NO.
WEIGHT					LW-2T-20K Hub Adapter
MATERIAL					Design Guide
7-4 H1100					SCALE: 1:2
PROPERTY AND CONFIDENTIAL					REV
THE INFORMATION CONTAINED IN THIS DRAWING IS THE SOLE PROPERTY OF MICHIGAN SCIENTIFIC CORPORATION. ANY REPRODUCTION IN PART OR AS A WHOLE WITHOUT THE WRITTEN PERMISSION OF MICHIGAN SCIENTIFIC CORPORATION IS PROHIBITED.					SHEET 2 OF 2